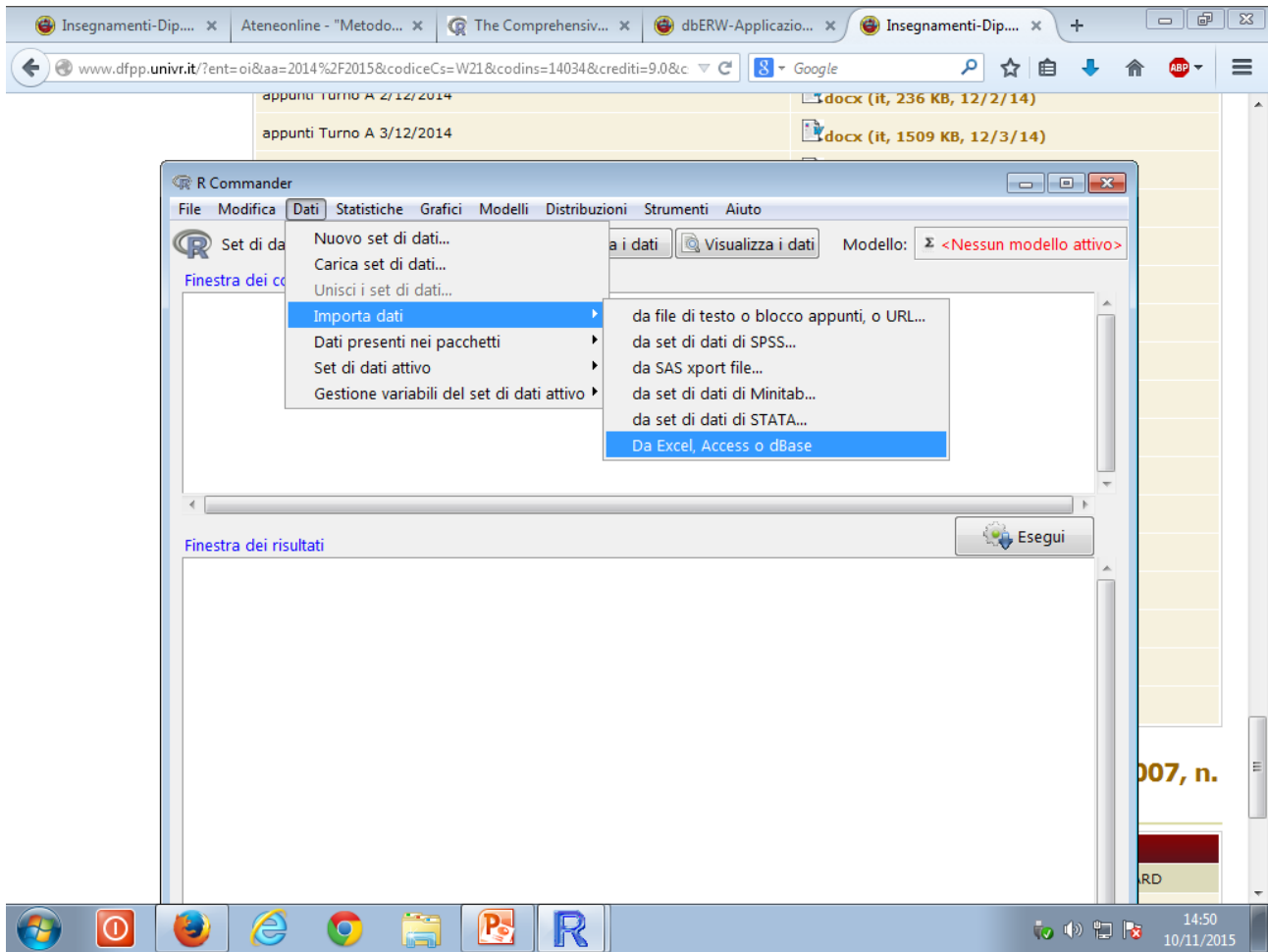
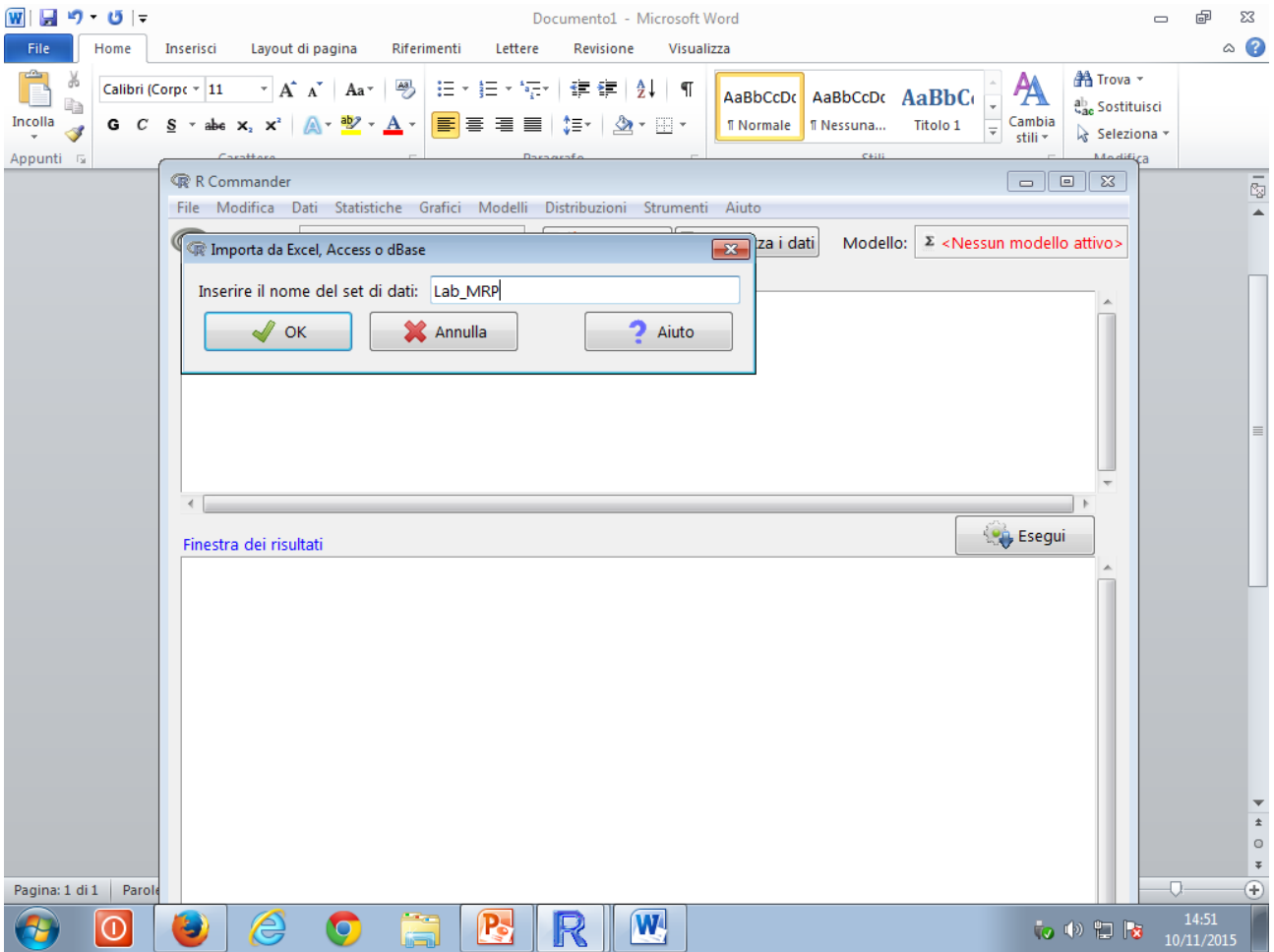
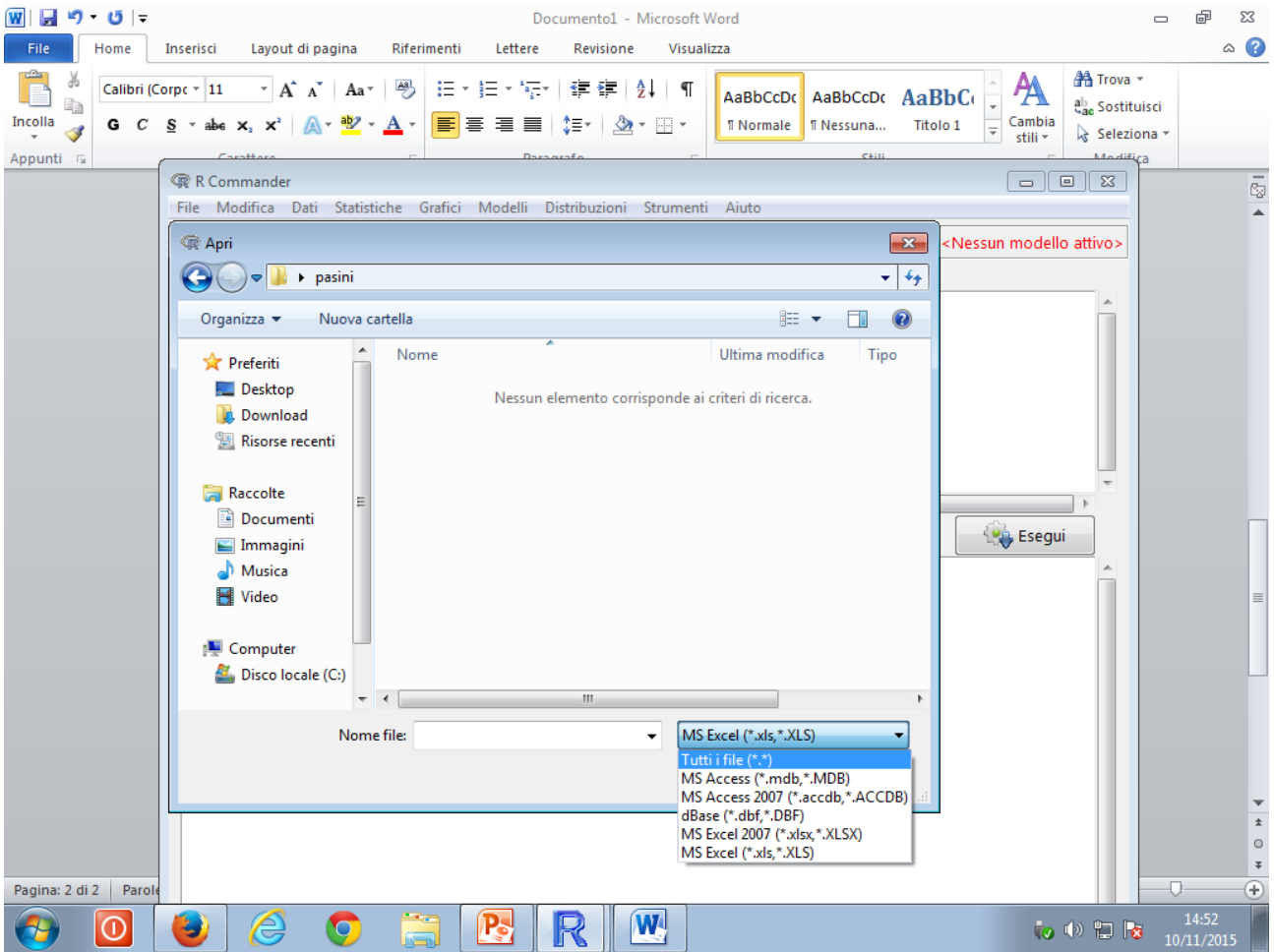
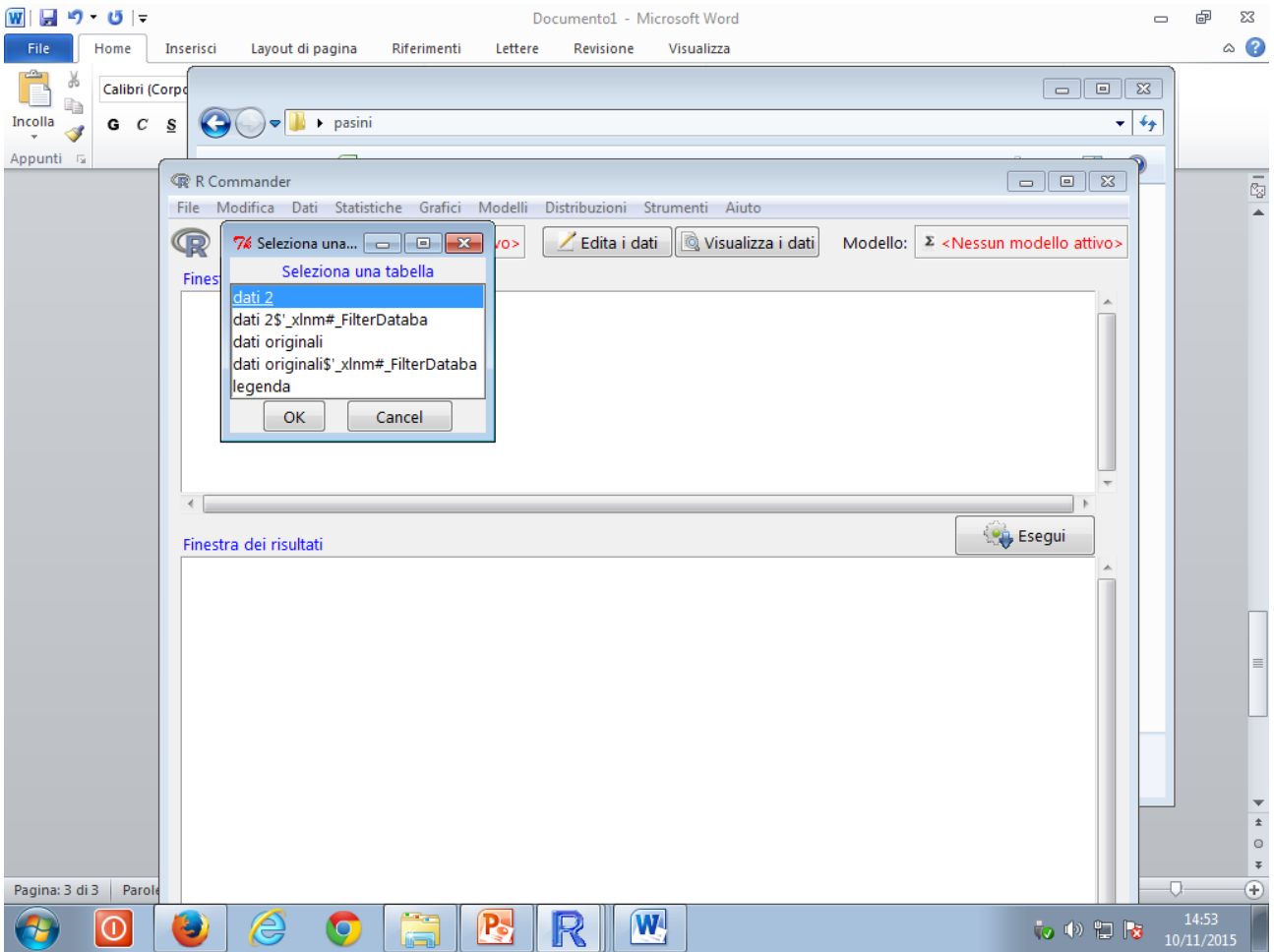


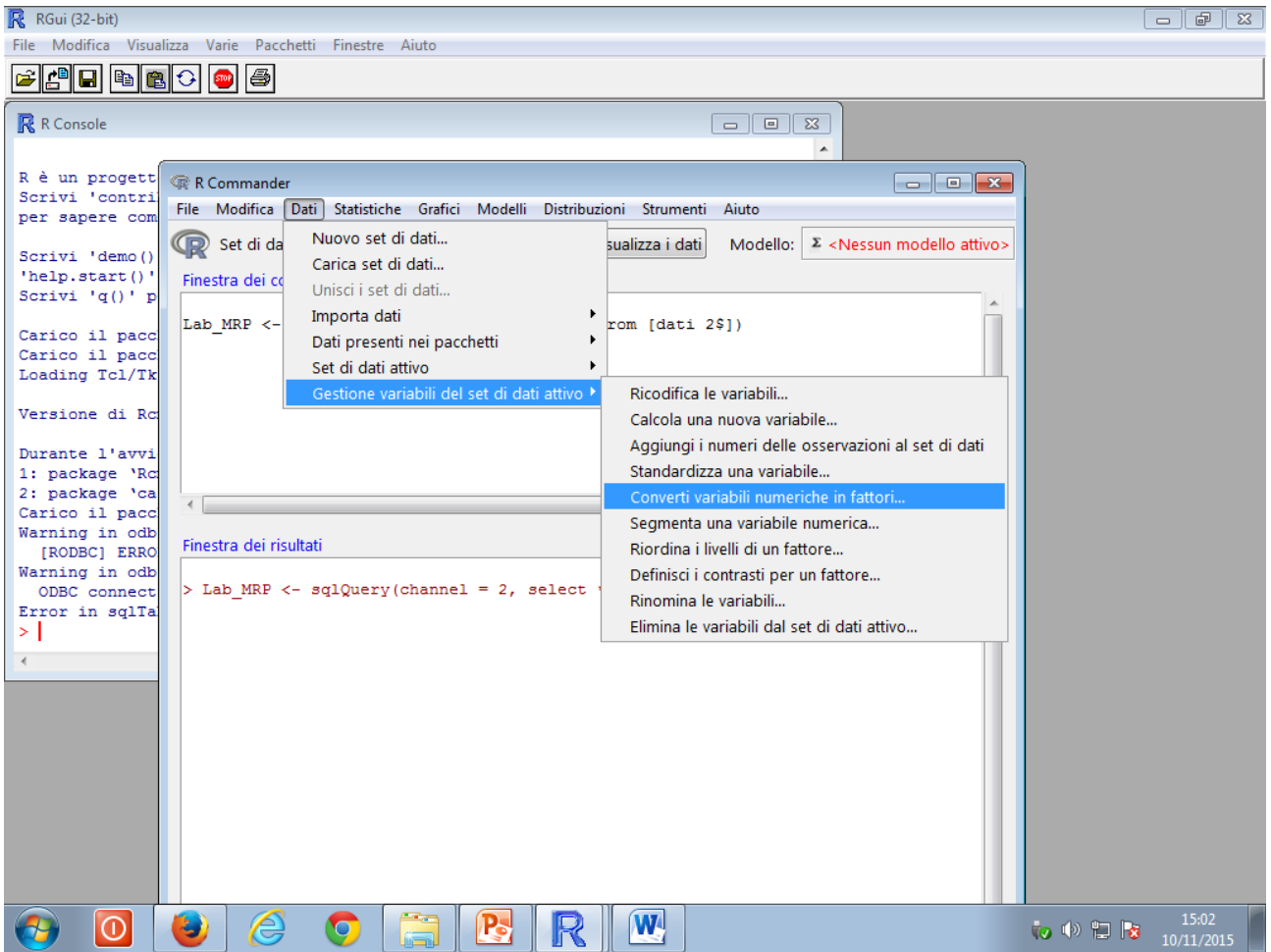
Appunti Lab MRP 10 novembre 2015

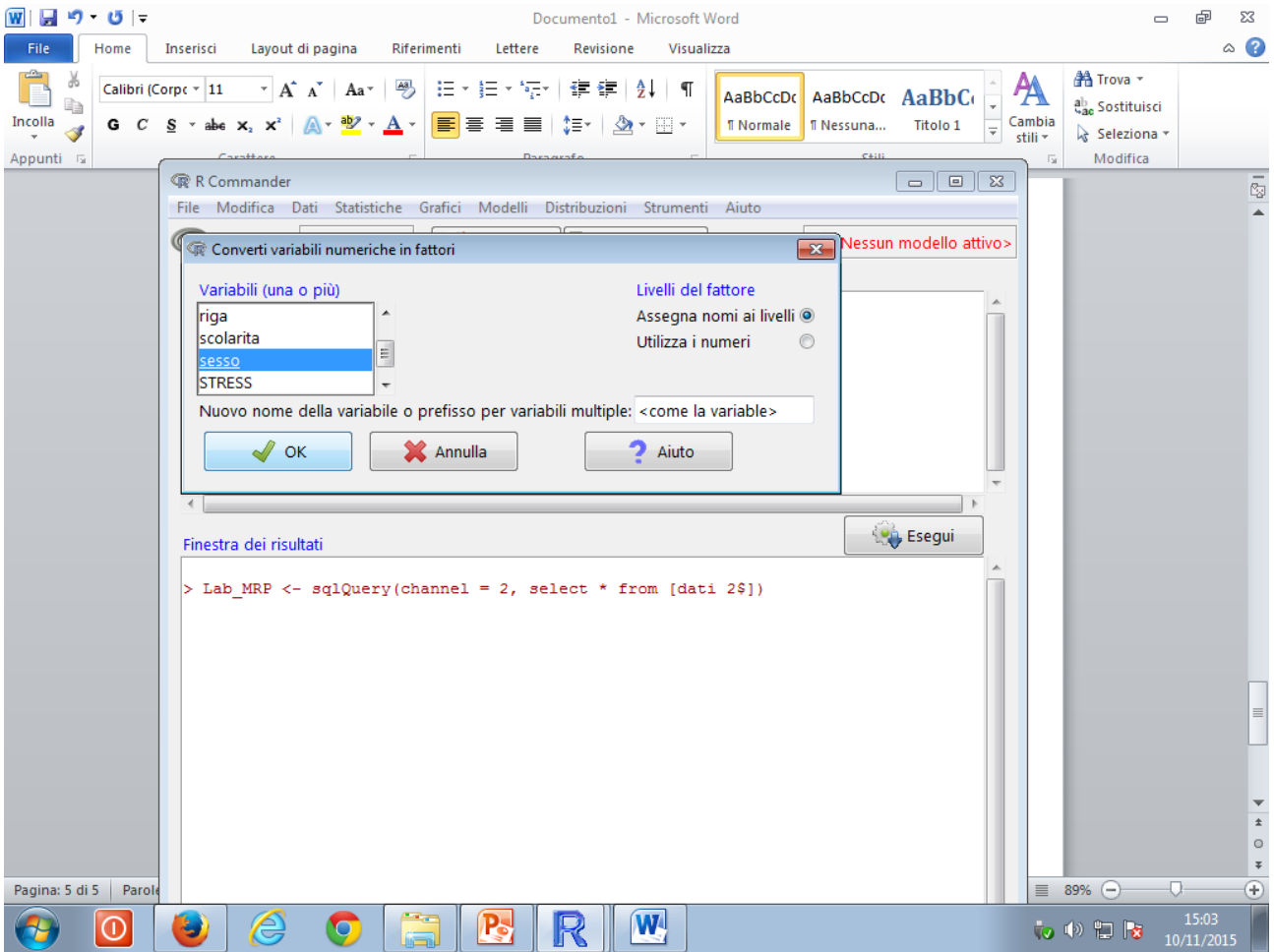


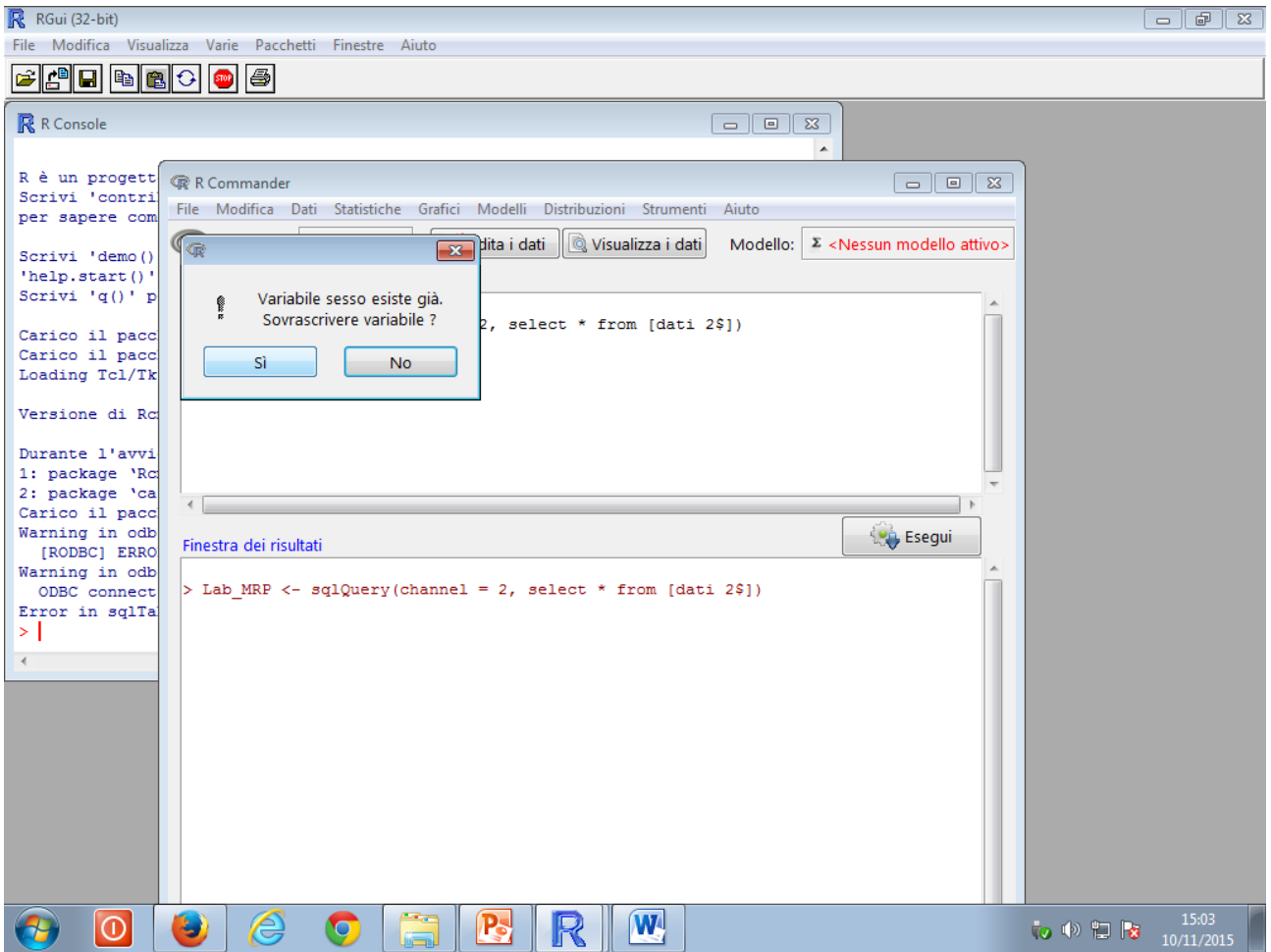


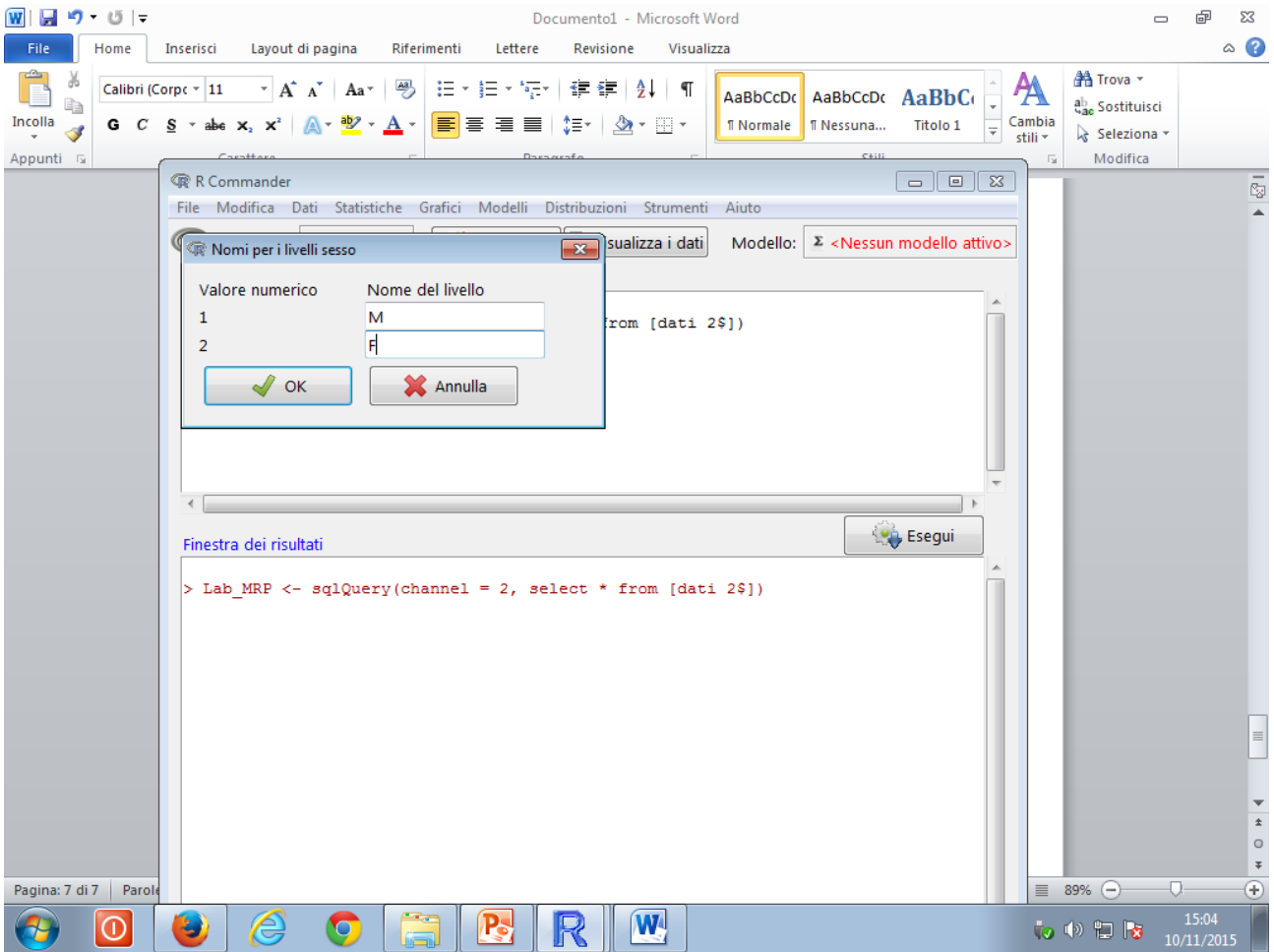


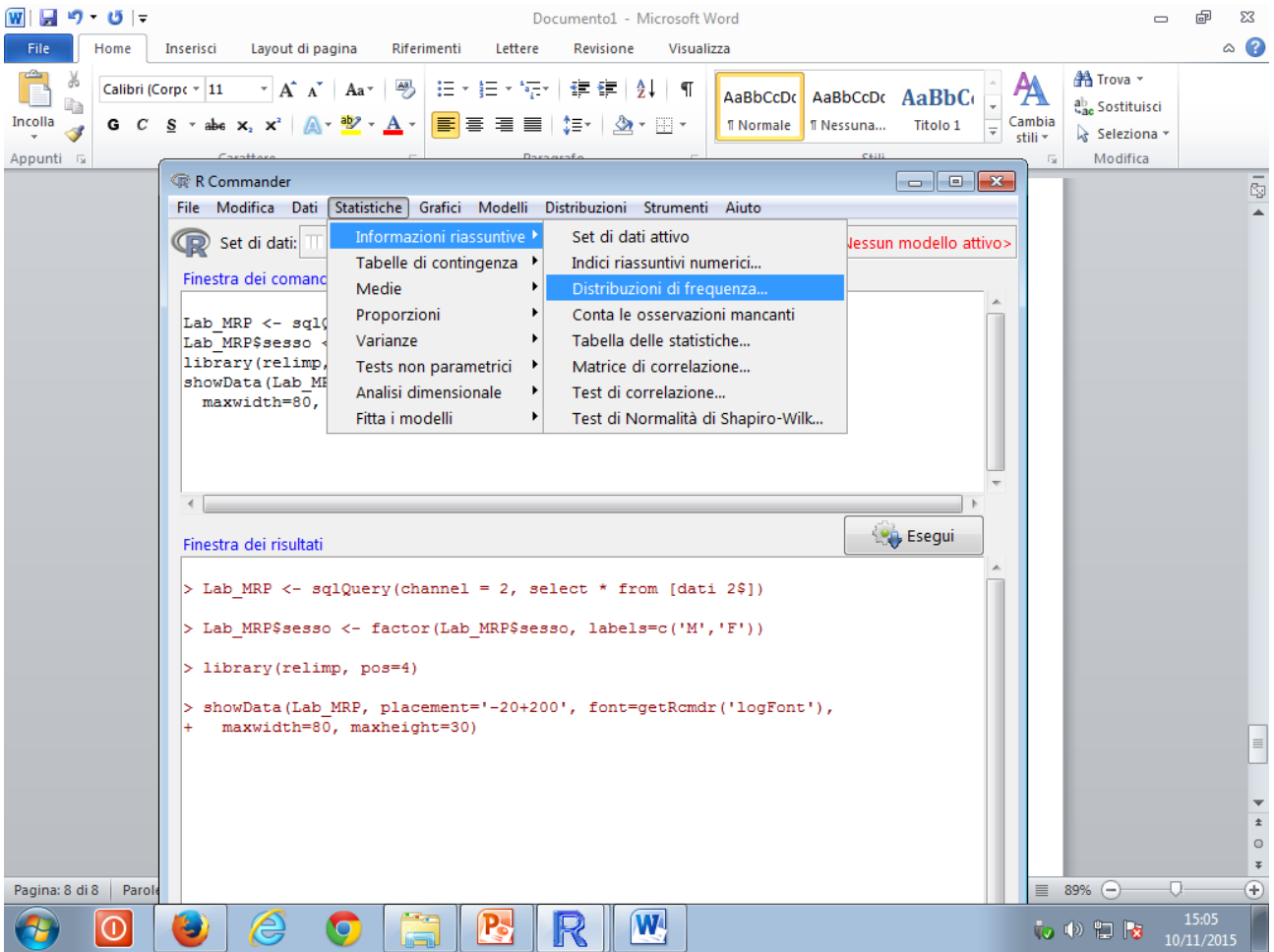


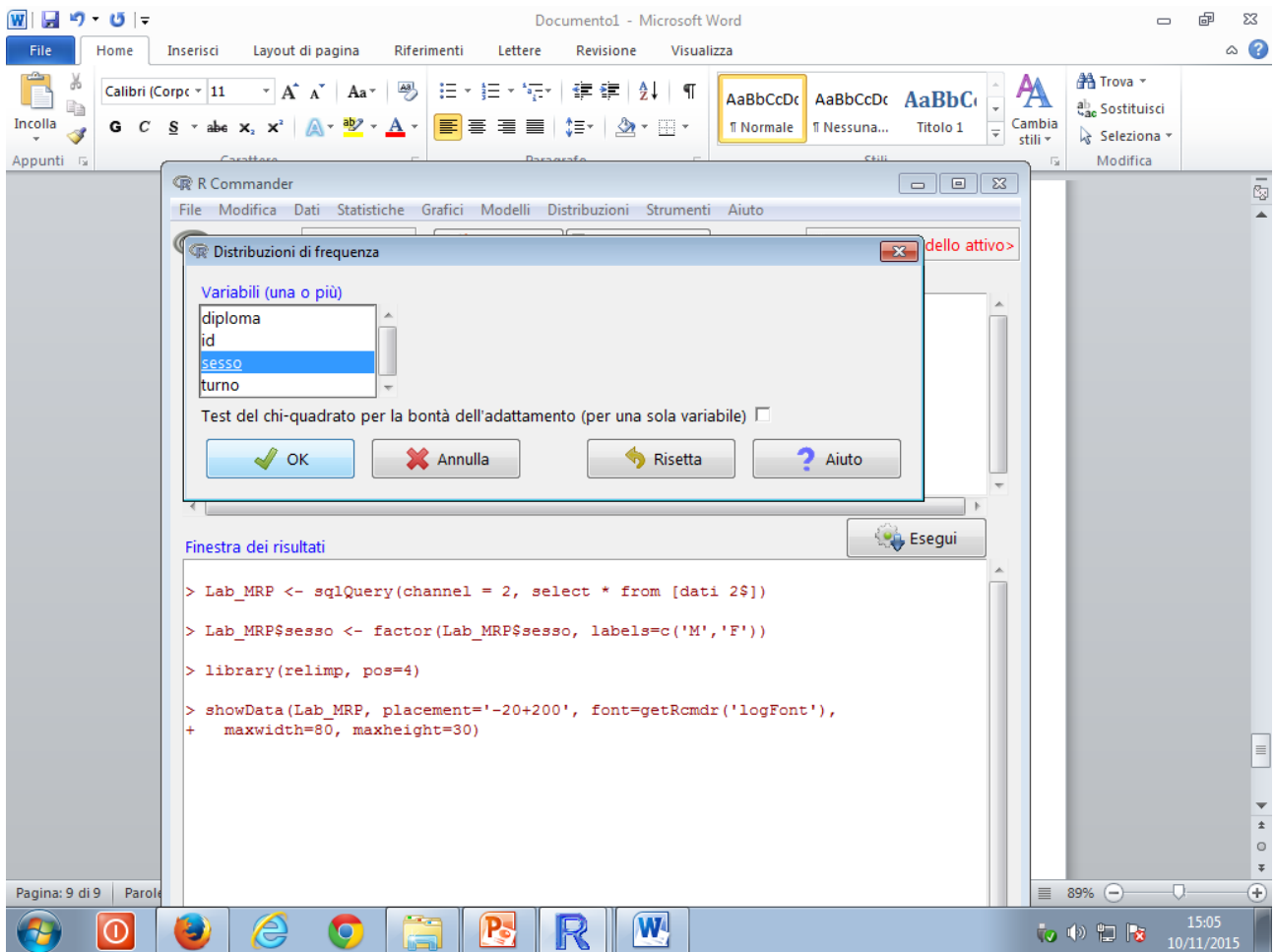












Esercitazione:

1. Convertire in fattori tutte le altre variabili numeriche che sono misurate su scala nominale (variabili qualitative)
2. Costruire le distribuzioni di frequenza per le altre variabili qualitative
3. Costruire dei diagrammi a barre equivalenti alle distribuzioni di frequenza appena costruite